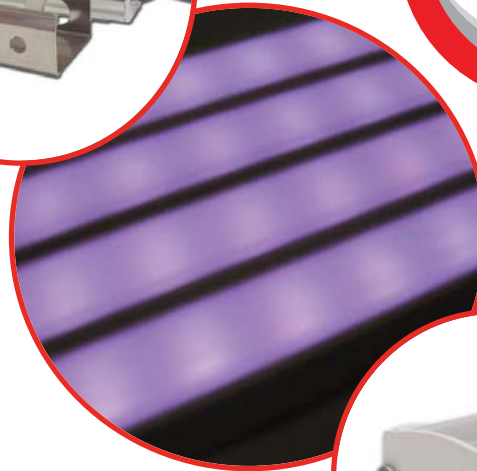


JIN Series (9W/metre)

Miniature High Performance
Linear Luminaire



- High output in a slender, low profile housing
- Simple parallel wiring for ease of installation
- Supplied with easy-to-fix mounting clips
- Low running costs, low maintenance
- Low power, low heat
- Colour Change version available

Description

Attractive, low profile, high performance linear LED luminaire. Constructed from a slender, powder-coated aluminium extrusion fitted with high brightness surface-mounted LEDs with a clear or opal polycarbonate filter. Each luminaire is terminated with a 1 metre cable and supplied with easy-to-fix mounting clips. 30 fitting sizes are available from 140mm to 1990mm, in 50mm increments. Please see **Fitting Length Table** for full details.

Characteristics

Optical

Number of LEDs = 120 x LEDs per metre
Illuminated Area = 15.5mm x length

White LED Data:

Colour	Colour Temp (typ)	lumens/m	CRI
Cool White	6,000K	437	75
Mid White	4,000K	406	80
Warm White	3,000K	375	85

Electrical

Single Colour:-
Operating Voltage = 24VDC
Typical Current = 375mA per metre (0.375A)
Power Consumption = 9W per metre
Uses njo PT3528 PCB
Luminaire Classification = Class III
(In accordance with BS EN 60598-1:2008)

Mechanical

Housing = powder-coated aluminium extrusion
Filter = clear or opal extruded polycarbonate
End Plates = powder-coated stainless steel
Mounting Clips = stainless steel (powder-coating optional)
IP rating = IP40 standard (IP64 optional)
Product Weight = 0.4kg per metre

Selection Guide

JIN1240-	PW-	WW-	C-	24
Product Series	Housing	LED Colour	Filter Type	Voltage
JIN = Slimline linear LED luminaire xxxx = Length in mm	PW = Powder-coated "Pure White" (RAL9010) PS = Powder-coated Silver (RAL9006)	CW = Cool White MW = Mid White WW = Warm White	C = Clear OP = Opal	24 = 24VDC

Example **JIN1240-PW-WW-C-24** (JIN1240, Powder-Coated White, Warm White LEDs, Clear filter, 24VDC)

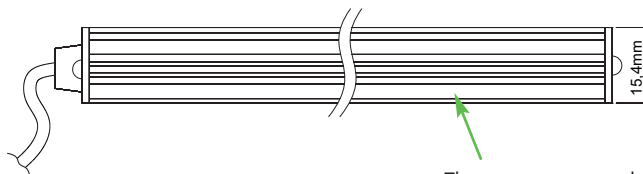
JIN Series (9W/metre)

Miniature High Performance
Linear Luminaire



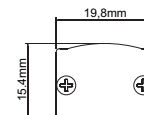
Mechanical Details

Side Elevation

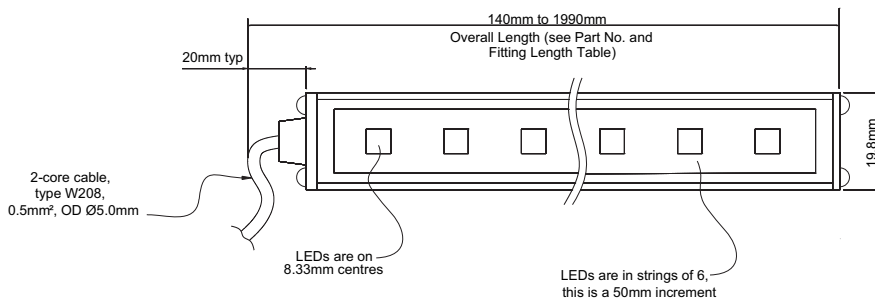


Three grooves on each side of the extrusion provides multiple mounting options - see mounting details below

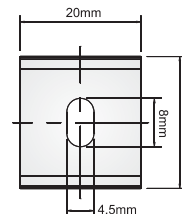
End Elevation



Front Elevation

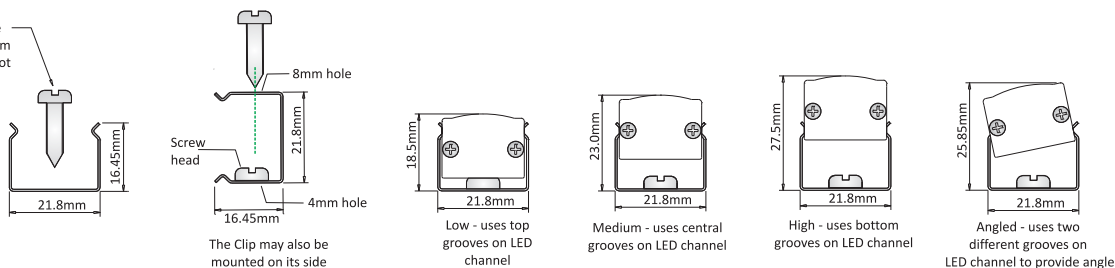


Top View Of Mounting Clip



Mounting Details

Contractor to choose suitable screws for Ø4.5mm wide mounting slot



Length of LED Unit	No. of Clips Supplied	Typical Mounting Clip Positions
140mm - 1,240mm	2	
1,290mm - 1,540mm	3	
1,590mm - 1,990mm	4	

N.B. Extra clips can be ordered at additional cost, Part No. **JIN-CLIP-SS** (Stainless Steel) or **JIN-CLIP-PC** (Powder-Coated).

The appearance and specifications of the product may be modified for improvement without notice.

JIN Series (9W/metre)

Miniature High Performance
Linear Luminaire



Fitting Length Table

Part Number Overall length	LED Type Nos	Length	Max Current (@ 24VDC)	Power (Watts) (@ 24VDC)	No of Mounting Clips per LED Unit
JIN140	Type 1	140mm	0.04A	1.0W	2
JIN190	Type 2	190mm	0.06A	1.4W	2
JIN240	Type 3	240mm	0.08A	1.9W	2
JIN290	Type 4	290mm	0.10A	2.4W	2
JIN340	Type 5	340mm	0.12A	2.9W	2
JIN390	Type 6	390mm	0.14A	3.4W	2
JIN440	Type 7	440mm	0.16A	3.8W	2
JIN490	Type 8	490mm	0.18A	4.3W	2
JIN540	Type 9	540mm	0.20A	4.8W	2
JIN590	Type 10	590mm	0.22A	5.3W	2
JIN640	Type 11	640mm	0.24A	5.8W	2
JIN690	Type 12	690mm	0.26A	6.2W	2
JIN740	Type 13	740mm	0.28A	6.7W	2
JIN790	Type 14	790mm	0.30A	7.2W	2
JIN840	Type 15	840mm	0.32A	7.7W	2
JIN890	Type 16	890mm	0.34A	8.2W	2
JIN940	Type 17	940mm	0.36A	8.6W	2
JIN990	Type 18	990mm	0.38A	9.1W	2
JIN1040	Type 19	1040mm	0.40A	9.6W	2
JIN1090	Type 20	1090mm	0.42A	10.1W	2
JIN1140	Type 21	1140mm	0.44A	10.6W	2
JIN1190	Type 22	1190mm	0.46A	11.0W	2
JIN1240	Type 23	1240mm	0.48A	11.5W	2
JIN1290	Type 24	1290mm	0.50A	12.0W	3
JIN1340	Type 25	1340mm	0.52A	12.5W	3
JIN1390	Type 26	1390mm	0.54A	13.0W	3
JIN1440	Type 27	1440mm	0.56A	13.4W	3
JIN1490	Type 28	1490mm	0.58A	13.9W	3
JIN1540	Type 29	1540mm	0.60A	14.4W	3
JIN1590	Type 30	1590mm	0.62A	14.9W	4
JIN1640	Type 31	1640mm	0.64A	15.4W	4
JIN1690	Type 32	1690mm	0.66A	15.8W	4
JIN1740	Type 33	1740mm	0.68A	16.3W	4
JIN1790	Type 34	1790mm	0.70A	16.8W	4
JIN1840	Type 35	1840mm	0.72A	17.3W	4
JIN1890	Type 36	1890mm	0.74A	17.8W	4
JIN1940	Type 37	1940mm	0.76A	18.2W	4
JIN1990	Type 38	1990mm	0.78A	18.7W	4