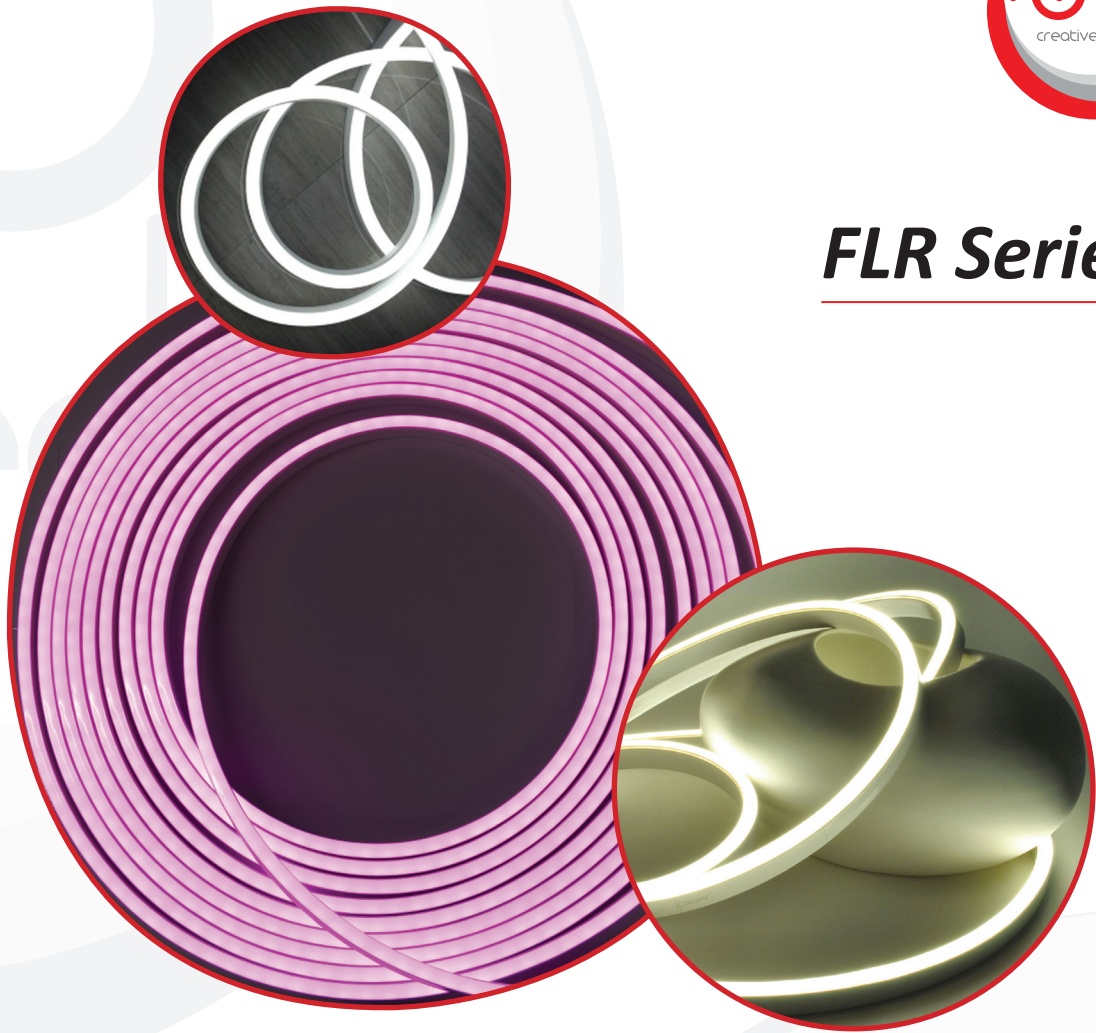




FLR Series



T5 version - 16mm (w) x 17mm (h), IP68

- Flexible LED Ribbon
- Suitable for a wide range of applications
- Indoor & outdoor use, rated at IP68
- High brightness SMD LEDs
- Smooth light output
- Easy installation
- Continuous lengths of up to 20 metres powered from both ends



FLR Series - T5 version



Description

This LED flexible ribbon, size 16mm (w) x 17mm (h) can be used for a range of applications i.e. decorative border lighting. It provides a high brightness, smooth output with a small bend radius. The ribbon is constructed from a PVC channel, fitted with **108x high quality LEDs per metre** and a **diffused light emitting surface**. The ribbon is encapsulated to achieve ingress protection to **IP68**. Power per metre is **12W**. Connect to a **24VDC constant voltage** power supply or control gear.

Characteristics

Optical Details:

Type	LEDs/ metre	LED Spacing	Beam Angle	Colour	Wavelength/CCT	Output/ metre
FLR-T5	108	9.26mm	160°	Red	630nm	130lm
FLR-T5	108	9.26mm	160°	Green	530nm	300lm
FLR-T5	108	9.26mm	160°	Blue	475nm	50lm
FLR-T5	108	9.26mm	160°	Amber	595nm	130lm
FLR-T5	108	9.26mm	160°	White	2500-6500K	480lm

Technical Details:

Type	Operating Voltage	Power/ metre (W)	Continuous Length (max.)	Increment Length	Min. Bend Diameter	IP-Rating
Red/Amber	24VDC	7.2W	20 metres	83.3mm	300mm	IP68
Green/Blue/White	24VDC	12W	20 metres	55.6mm	300mm	IP68

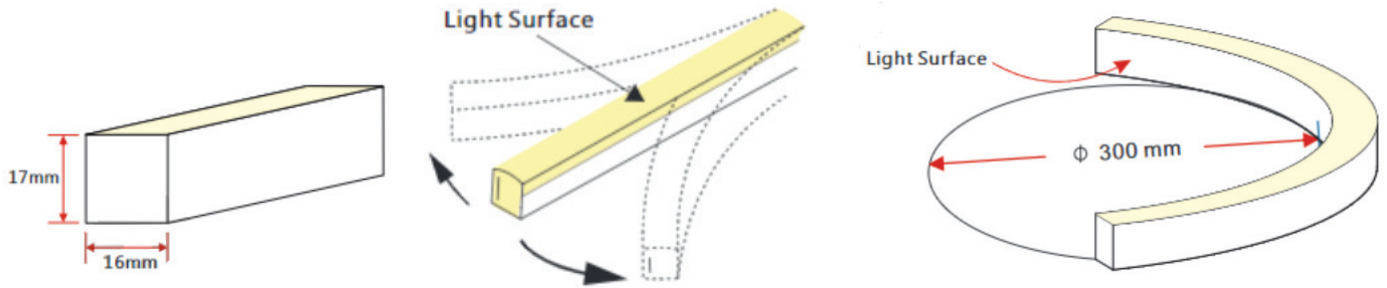
Selector Guide

FLR-	T5-	MW-	12-	24-	IP68-	10M
Product Series FLR = Flexible Light Ribbon	Type T5 = Top Emitting, Size 16x17mm	LED Colour R = Red LEDs G = Green LEDs B = Blue LEDs A = Amber LEDs W30 = White (3000K)LEDs <i>(other CCT/colour options available)</i>	Power 12 = 12Watts	Voltage 24 = 24VDC (standard operating voltage)	IP-rating IP68	Cable Length 10M = 10 Metre Cable <i>(other lengths available)</i>

FLR Series - T5 version



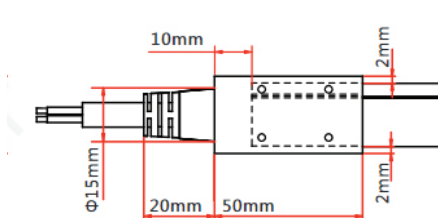
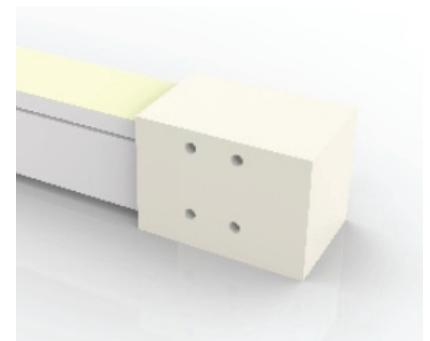
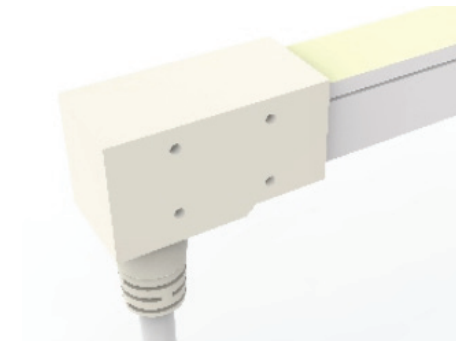
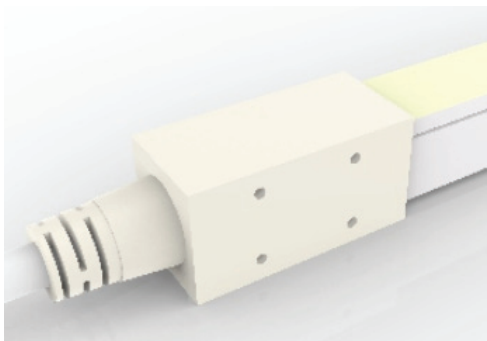
T5 - Physical Details & Minimum Bend Diameter



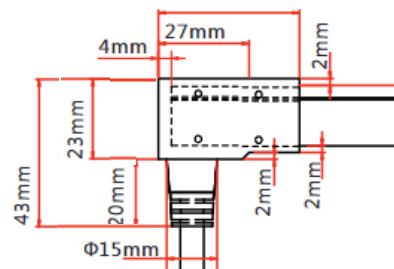
Weight/metre = 325g

Top. = -20°C to +45°C

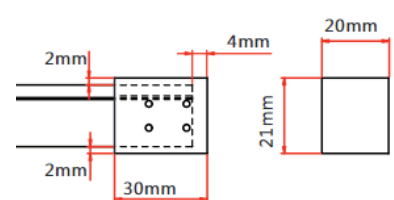
Dual Injection Moulded Connectors and Endcap



IP68 end connector. Allow 55mm in addition to increment length (we recommend allowing for a 25mm cable bend radius).



IP68 base connector. Allow 4mm in addition to increment length (we recommend allowing for a 25mm cable bend radius).



IP68 endcap. Allow 4mm in addition to increment length.

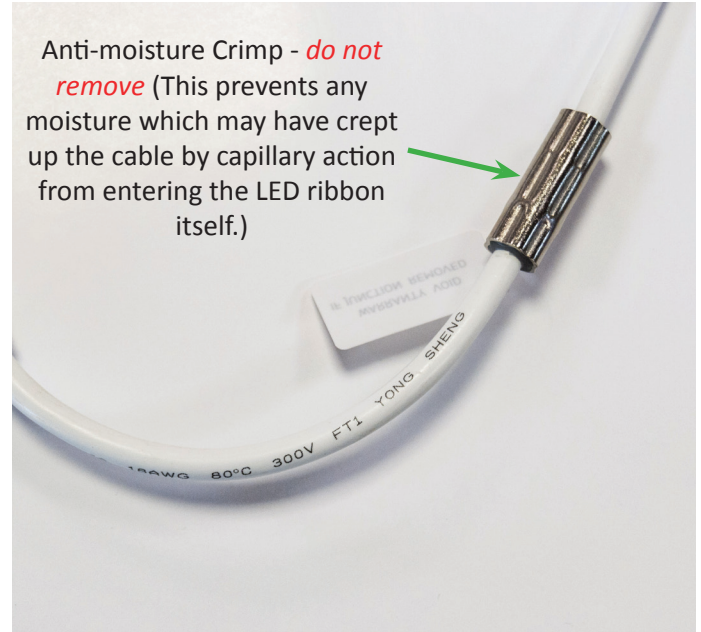
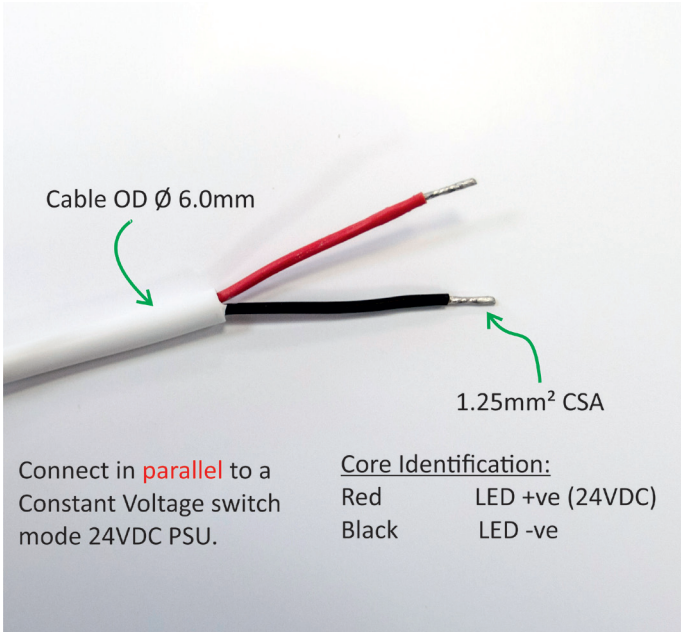
Side connectors are also available - please contact us for further details.

FLR Series - T5 version



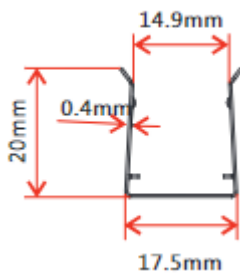
Cable Detail

Anti-Wicking Ferrule

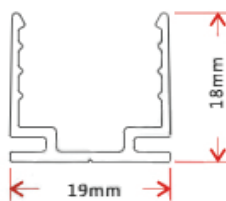
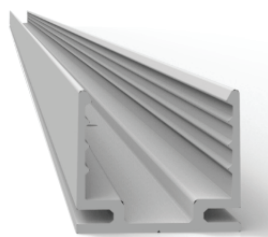


Mounting Details

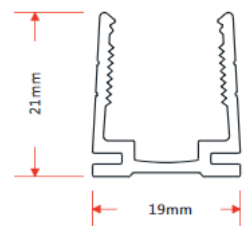
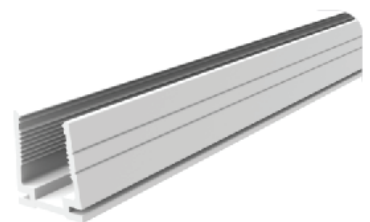
Supplied with a choice of mounting channel.



Flexible Stainless Steel Channel
(available up to 900mm)



Aluminium Channel
(available up to 2 metres)



Plastic Channel
(available up to 2 metres)